

## PRODUCT DATASHEET

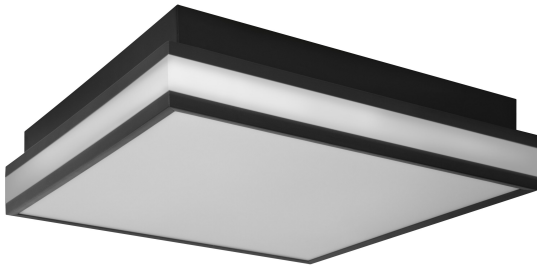
# SMART+ MATTER Magnet Black 300x300mm Tunable White

SMART+ MATTER Magnet | Smart decorative ceiling luminaire TW and dimmable

---

### Areas of application

- Indoor applications
- Kitchens, living rooms, children's rooms or home offices



---

### Product benefits

- Easy and quick installation
- Magnetic closure
- No screw visible

---

### Product features

- Controllable via LEDVANCE SMART+ App (with minimum Android 8.0 or iOS 14.0)
- Controllable via voice control available: Google Assistant or Amazon Alexa
- Adjustable color temperature via Tunable White: 3,000...6,500 K
- Dimmable
- Network protocol: WiFi



## TECHNICAL DATA

### Electrical data

Nominal wattage	24.00 W
Nominal voltage	220...240 V
Mains frequency	50...60 Hz
Nominal current	180.000 mA
Power factor $\lambda$	> 0.90
Total harmonic distortion	< 20 %
Protection class	I
Operating mode	External LED driver

### Photometrical data

Luminous flux	1400 lm
Total luminous flux of contained light sources	2800 lm
Luminous efficacy	96 lm/W
Color temperature	3000...6500 K
Light color (designation)	Tunable White
Color rendering index Ra	≥80
Standard deviation of color matching	< 6 sdc <sub>m</sub>
Photobiological safety group acc. to EN62778	RG0
Photobiological safety group acc. to EN62471	RG0
Beam angle	120 °

### Dimensions & Weight

Length	300.00 mm
Width	300.00 mm
Height	86.00 mm
Product weight	1130.00 g

SMART WIFI ORBISMAGNET  
300X300TW

### Materials & Colors

Product color	Black
Housing color	Black
Body material	Steel
Cover material	Polycarbonate (PC)
Glow Wire Test according to IEC 60695-2-12	650 °C
Mercury content	0.0 mg

### Application & Mounting

Ambient temperature range	-20...+40 °C
Temperature range at storage	-20...+80 °C
Type of connection	Screw terminal
Type of protection	IP20
Protection class IK (shock resistance)	IK03
Dimmable	Yes
Type of dimming	WiFi
Mounting type	Surface
Application environment	Indoor
With light source	Yes

### Lifespan

Lifespan L70/B50 at 25 °C	30000 h
Number of switching cycles	15000

### Emergency lighting

Type of emergency operation test	None
----------------------------------	------

### Certificates & Standards

Standards	CE / UKCA
Luminaire with limited surface temperature, "D sign"	No
Replaceable light source (EPREL)	Not replaceable

### Additional product data

Product remark	Available from October 2025 / Reset settings to default by switching the product on for five seconds and off for five seconds and repeating this five times.
----------------	--

### EQUIPMENT / ACCESSORIES










- Mounting bracket included

- Mounting screws and dowels included
- Control via app or voice control requires compatible Smart home system
- For control via LEDVANCE SMART+ App, a smartphone or tablet is required (with minimum Android 8.0 or iOS 14.0)

### Safety advice

- All electrical connections must be made by a qualified person.
- Caution, risk of electric shock.
- Product in protection class I. All electrically conductive, metallic housing parts that can absorb voltage during operation or during maintenance in the event of a fault must be continuously connected to the protective earthing conductor.
- Check wall-ceiling for suitability. If uncertain, seek professional advice.

### DOWNLOAD DATA

Documents and certificates		Document name
	User instruction / safety instructions	G11240109 SMART WIFI MAT MAGNET
	Addon technical information	Wifi remote control compatibility list
	Addon technical information	Wifi remote control compatibility list (DE)
	Legal information	Informationstext 18 Abs 4 ElektroG
	Legal information	Safety insert G11243082
	Legal information	Legal Insert G11229428
	Declarations of conformity	SMART Matter Wifi Ceiling
	Declarations of conformity UKCA	SMART Matter Wifi Ceiling
	EU Data Act	SMART MATTER Lamps Luminaires Plugs

### LOGISTICAL DATA

Product code	Packaging unit (Pieces/Unit)	Dimensions (length x width x height)	Gross weight	Volume
4099854473388	Folding box 1	112 mm x 352 mm x 352 mm	1380.00 g	13.88 dm <sup>3</sup>
4099854473395	Shipping box 4	462 mm x 368 mm x 370 mm	6663.00 g	62.91 dm <sup>3</sup>

The mentioned product code describes the smallest quantity unit which can be ordered. One shipping unit can contain one or more single products. When placing an order, for the quantity please enter single or multiples of a shipping unit.

---

### References / Links

– Further information and frequently asked questions (FAQs) at [www.ledvance.com/en-int/home-lighting/services/faq](http://www.ledvance.com/en-int/home-lighting/services/faq)

---

### DISCLAIMER

Subject to change without notice. Errors and omission excepted. Always make sure to use the most recent release.