

PRODUCT DATASHEET

SMART+ MATTER LED Spot Recess GU10 Adjustable 4.7W RGBW Satin Nickel

SMART+ MATTER LED Spot Recess GU10 | Recess with smart matter GU10 bulb included



Areas of application

- Living areas (living rooms, dining rooms, bedrooms etc.)

Product benefits

- Can be rotated and swiveled for optimum illumination
- Sustainable solution thanks to exchangeable light sources
- Through-wiring possible with included connector box
- Easy mounting

Product features

- Controllable via SMART+ App (with minimum Android 8.0 or iOS 14.0) or any other Matter-compatible platforms
- Smart control for adjustable color temperature and RGB color control
- Adjustable swivel angle
- GU10 lamp included
- Through wiring possible
- Type of protection: IP20



TECHNICAL DATA

Electrical data

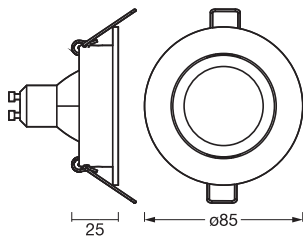
Nominal wattage	4.70 W
Nominal voltage	220...240 V
Mains frequency	50...60 Hz
Nominal current	40.000 mA
Max. number of luminaires per miniature circuit breaker B16	46
Max. number of luminaires per miniature circuit breaker C16	68
Power factor λ	0.50
Total harmonic distortion	< 150 %
Protection class	II
Operating mode	Mains voltage

Photometrical data

Luminous flux	315 lm
Total luminous flux of contained light sources	350 lm
Luminous efficacy	51 lm/W
Color temperature	2700...6500 K
Light color (designation)	Tunable White
Color rendering index Ra	> 80
Standard deviation of color matching	6 sdc _m
Flickering metric (Pst LM)	≤1
Stroboscope effect metric (SVM)	<0.4
Photobiological safety group acc. to EN62778	RG1
Beam angle	36 °

Dimensions & Weight

Diameter	85.00 mm
Height	58.00 mm
Product weight	160.00 g



SMART MAT SP ADJ 4.9W RGBW
GU10

Materials & Colors

Product color	Satin Nickel
Housing color	Satin Nickel
Body material	Aluminum
Glow Wire Test according to IEC 60695-2-12	650 °C

Application & Mounting

Ambient temperature range	-20...+40 °C
Temperature range at storage	-20...+80 °C
Type of connection	Terminal, 2-Pole (L, N)
Type of protection	IP20/IP20
Dimmable	No
Mounting type	Recessed
Mounting location	Ceiling
Mounting diameter	68 mm
Mounting depth	100 mm
With light source	Yes
Replaceable light source	Yes
Holder designation	GU10

Lifespan

Lifespan L70/B50 at 25 °C	20000 h ¹⁾
Number of switching cycles	100000

¹⁾ t[h]: L70 / B50 @ 25 °C (Ta), t[h]: L80 / B10 @ 25 °C (Ta), t[h]: L90 / B10 @ 25 °C (Ta)

Emergency lighting

Type of emergency operation test	None
----------------------------------	------

Certificates & Standards

Standards	CE / UKCA
Luminaire with limited surface temperature, "D sign"	No

Additional product data

Product remark	Available from October 2025
Number of illuminants	1







EQUIPMENT / ACCESSORIES

- GU10 Lamp holder + Connector Box

Safety advice

- Luminaire must be disconnected from mains during installation, maintenance and cover removal
- Check wall-ceiling for suitability. If uncertain, seek professional advice.
- All electrical connections must be made by a qualified person.
- Caution, risk of electric shock.

DOWNLOAD DATA

	Documents and certificates	Document name
	User instruction / safety instructions	SMART MAT SP ADJ 4.7W RGBW GU10
	User instruction / safety instructions	Safety insert G11243081
	Legal information	LI_G11261814_R
	Declarations of conformity	CE Declaration SMART MATTER Spotlights
	Declarations of conformity UKCA	UKCA Declaration SMART MATTER Spotlights
	EU Data Act	SMART MATTER Lamps Luminaires Plugs

LOGISTICAL DATA

Product code	Packaging unit (Pieces/Unit)	Dimensions (length x width x height)	Gross weight	Volume
4058075853775	Folding box 1	83 mm x 110 mm x 103 mm	202.00 g	0.94 dm ³
4058075853782	Shipping box 20	437 mm x 237 mm x 234 mm	4507.00 g	24.24 dm ³

The mentioned product code describes the smallest quantity unit which can be ordered. One shipping unit can contain one or more single products. When placing an order, for the quantity please enter single or multiples of a shipping unit.

DISCLAIMER

Subject to change without notice. Errors and omission excepted. Always make sure to use the most recent release.