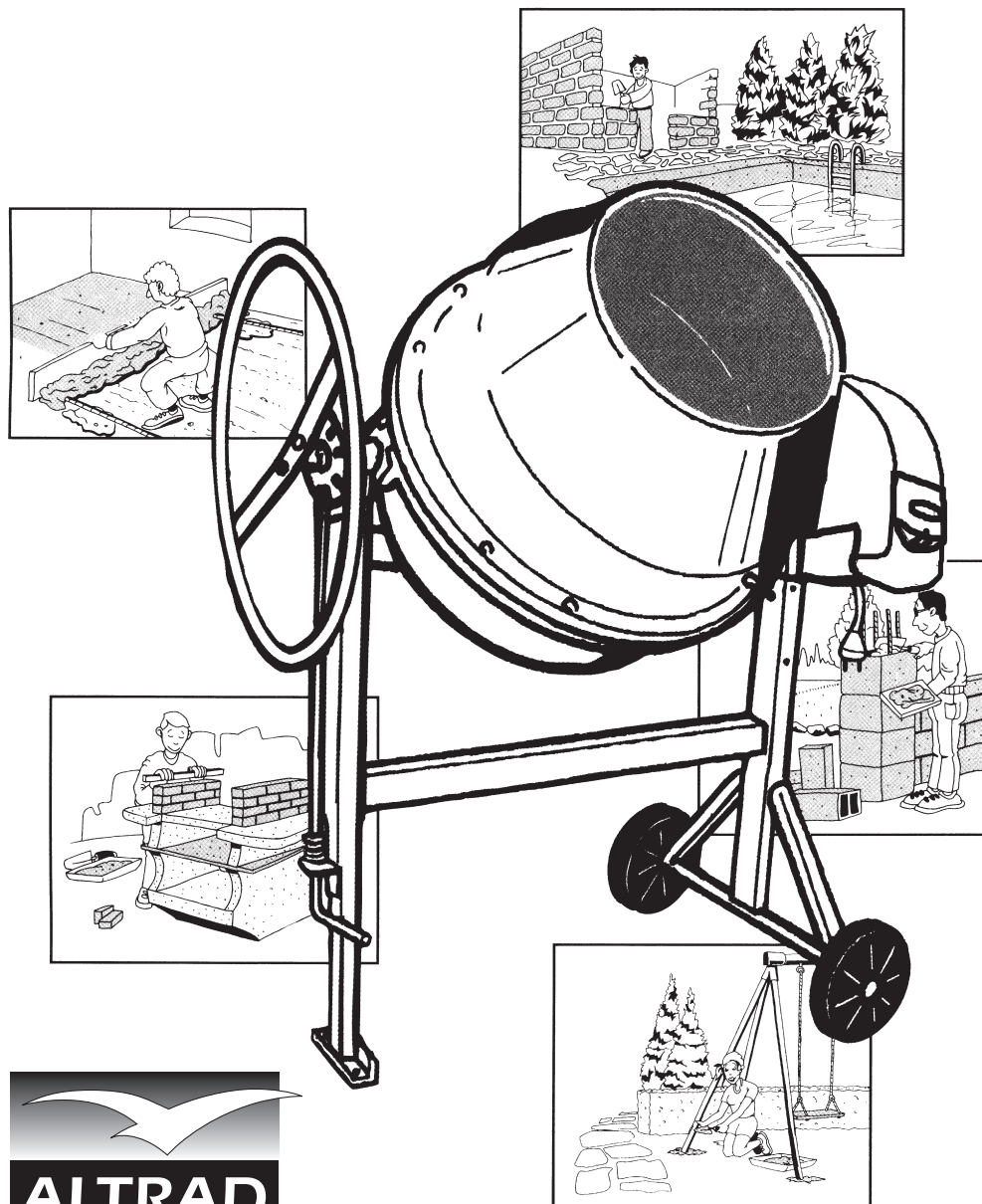


HMP 165 L - HMP 180 L

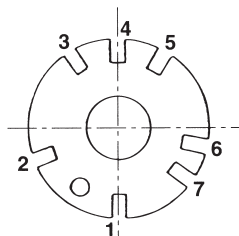


GB

OPERATION - CARE - SINGLE PARTS

CEMENT MIXER MACHINES HMP 165L - HMP 180L





TECHNICAL DATA		HMP 165L	HMP 180L
Volume mixer drum	L	160	175
Mixing capacity	L	130	140
Electrical motor 230 V/50 Hz	W	850	850
L	mm	1220	1220
B	mm	700	700
H	mm	1340	1420
Wheel, diameter	Ø mm	200	200
Weight with electrical motor	kg	50.5	51.5



PRODUCTION OF MORTAR AND CEMENT

The locking disk for setting the angle of inclination of the drum allows 7 positions :

- | | | |
|----------|----------------|---------------------------------------|
| Position | 1 | Opening of the mixer drum upwards. |
| Position | 2 | Mixing on the left side. |
| Position | 3 | Emptying/idle position on left side. |
| Position | 4 | Opening of the mixer drum downwards. |
| Position | 5 | Emptying/idle position on right side. |
| Position | 6 and 7 | Mixing on right side. |

 Dosage for cement and mortar (with a 25 kg sack of cement).			
	Sand 	Gravel 	Water 
CEMENT	30 L	60 L	Around 13 L
MORTAL	60 L	-	Around 13 L

•Set the required angle of inclination for the mixer drum (to the right or the left). Inclination angles in the horizontal range ensure better mixing results, however they lower the capacity.

•First place a small volume of water into the mixer drum, then add the required amount of cement to the aggregates (gravel or sand) and place into the drum. Keep adding water whilst loading the drum.

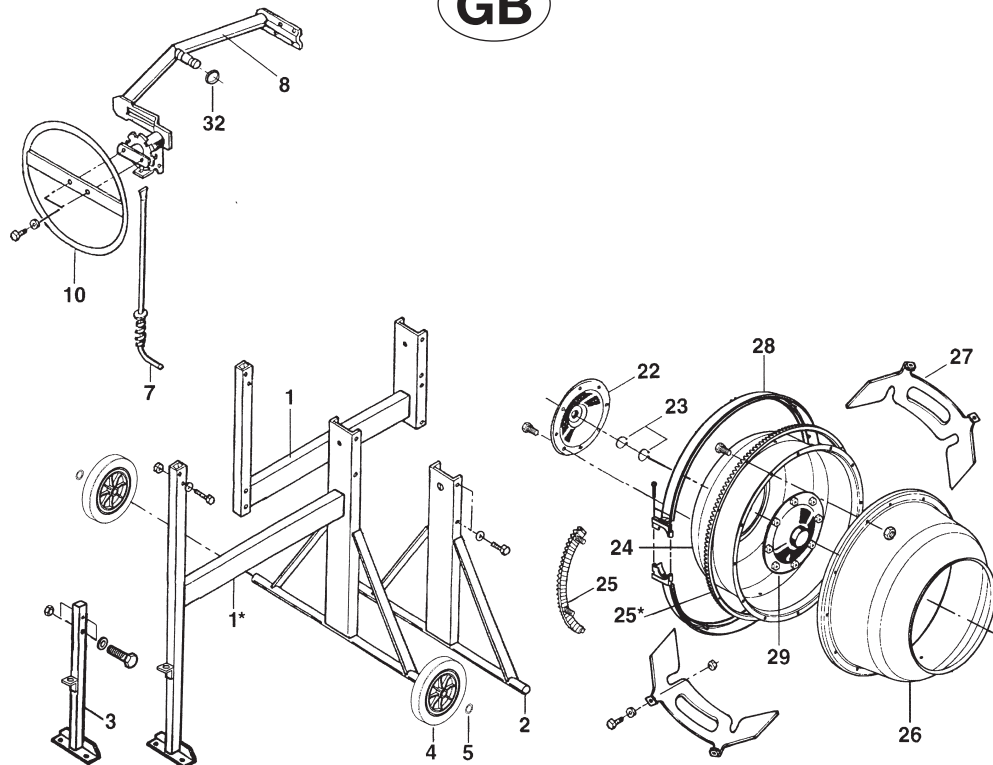
•The table on page 1 provides information about the doses. The water quantities stat-

ed are nonbinding; they may vary depending on the level of moisture in the aggregates. The table values are therefore only recommendations, for which the manufacturer will not assume any liability (1 spade = 4 litres ; 1 wheelbarrow = 60 litres).

•Allow the mixer machine to run for about 1 minute to ensure the materials are thoroughly mixed.

This information only represents recommendations, for which the manufacturer will not assume any liability.

GB

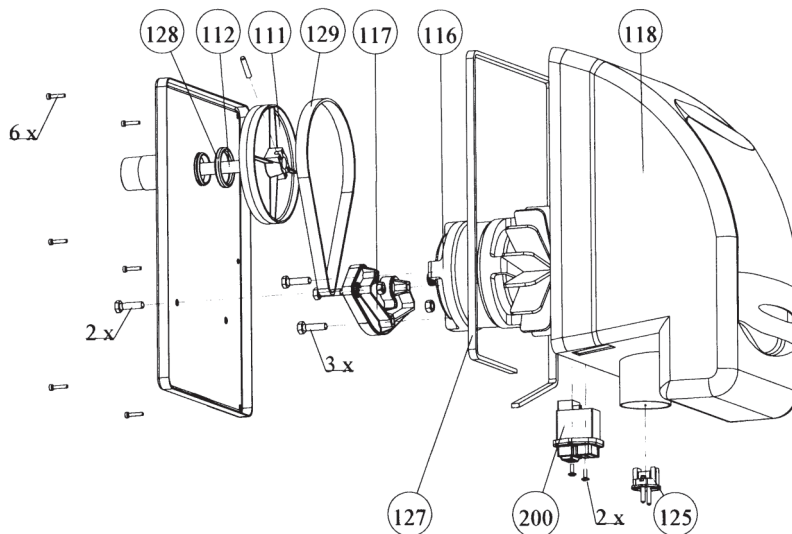


Draw.	Qty	HMP 165L	HMP180L	Designation
1	1	90391006	90391006	Upper part of frame
1*	1	650435	650435	Carriage
2	1	90391002	90391002	Swivel axle
3	1	90391001	90391001	Swivel foot
4	2	90331009	90331009	Wheel/rubber ø 200
5	2	90009911	90009911	Disk
7	1	401881	401882	Locking system
8	1	90393002	90393002	Bracket
10	1	90393013	90393013	Detachable adjustm. wheel
11	1	90333045	90333045	Pinion

Draw.	Qty	HMP 165L	HMP180L	Designation
12	2	90000906	90000906	Rolling bearings 6202 EE
13	1	401981	401981	Drive axle
22	1	90392003	90392003	Flange
23	2	90009916	90009916	Ring lock 30x2e
24	1	90332020	90332020	Lower part of mixer drum
25	4	90332038	90332038	Segment
26	1	90332044	90332045	Upper part of mixer drum
27	2	90392015	90392015	Driver plate L
28	1	GN 590054	GN 590054	Finger protection
29	1	90392006	90392006	Flange
32	1	90394030	90394030	Rubber seal

GB

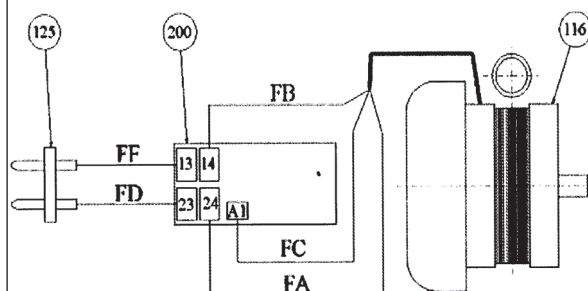
Diagram 1



← B xxx	#
111	GN 800 030
117	GN 590 004
118	GN 593 004
125	GN 562 005
127	GN 592 003
128	GN 543 000
129	GN 531 001
200	GN 562 078

116 850 W GN 561 002

Diagram 2



GB

■ COMMISSIONING

Place the cement mixer on stable firm ground to ensure stability. Remove all objects from around the machine that could pose a risk of accident or interfere with the machine.

Before switching on the machine, check and note the following:

- The power supply is 230 V (on two conductor phases).
- The minimum capacity must be 5 Amperes.
- The power circuit must be secured with fuses or a circuit breaker (FI).
- Nobody should have direct contact with the machine or stand directly next to it. They must ensure that no tools are leaned against the machine.
- You will need a power cable with a rubber hose line H 07 RN-F or equivalent type with two conductor phases (cross-section 1.5mm²).
- The maximum length is 50 m (material of class II, no neutral conductor). A larger cross-section is required if the cable exceeds 50 m in length.
- All protective fixtures on the machine must be in place and functional.

IMPORTANT COMMENTS

- The entire motor block is equipped with double insulation of the Class II and IP 45 - protection (all-round splashwater protection), an electromagnetic switch and a thermal cut-out.
- **CAUTION !** Avoid running the machine in neutral, as this will overheat the motor.

RECOMMENDATIONS AND SAFETY INFORMATION

- When the machine is switched on, there may never be any rolled cables on the drum, as this will lead to large voltage drops and ultimately damage the motor.
- Do not place your head or hands into the inside of the drum as long as the machine is running.
- Never open the protective hood if the machine has not been disconnected from the power supply.
- Switch off the cement mixer machine and disconnect the machine from the power supply every time you need to intervene into the machine.
- Never start the machine if the protective fixtures are missing.
- Only use building materials in the cement mixer machine. We would urgently advise you to never use it to mix any other materials, e.g. chemicals.
- Never hit the mixer drum with tools.
- Never use spare parts of another make to replace defective parts.

GB

■ CARE

- Every time after use, always clean the mixer drum with a spade full of gravel and water.
- **CAUTION!** Always switch off the machine and disconnect it from the power supply before cleaning the outside of the machine. If a water jet or high pressure jet is used, ensure that no water is splashed into the motor.
- Oil the bearings of the clips from time to time via the designated opening.
- The rolling bearings of the mixer drum and the drive pinion are maintenance-free, no lubrication is necessary.
- The sprocket is made of a highly-resistant wear proof composite material, it is maintenance-free and does not need to be lubricated. It significantly reduces the noise produced by the machine.

Always disconnect the mains plug before opening the panelling. The mixer may only be operated when the panelling is completely closed. Caution! Insulation-protected machine. Protection class II is only achieved if original insulation materials are used for repairs and if the insulation clearances are not changed.en.

■ MAINTENANCE

The drive pinion of the mixer drum and the driving belt are wear parts. To avoid

all failures/standstills, you should keep a stock of spare parts.

■ SPARE PARTS

When ordering spare parts from authorised dealers, always state the type and type number of the cement mixer machine (see type plate on the motor hood), the required quantity, the article name and the article number of the required parts.

■ MODIFICATIONS TO THE PRODUCT

We continuously endeavour to improve the quality and effectiveness of our products and therefore reserve the right to make changes to the series production of this product.

■ GUARANTEE

The manufacturer grants a 12-MONTH guarantee for its cement mixer machine starting on the date of purchase. This guarantee promises free replacement of faulty parts due to a construction error or material fault. The manufacturer reserves the right to examine the faulty parts. There is no guarantee for faults resulting from: incorrect handling, poor use, the use of third-party spare parts or poor maintenance.

The manufacturer will not assume liability if recommendations and the safety information are not observed.

EG Konformitätserklärung



Wir

ALTRAD-Lescha GmbH
Josef-Drexler-Str. 8
D 89331 Burgau



Erklären in alleiniger Verantwortung, dass dieses Produkt mit folgenden EG-Richtlinien übereinstimmt:

Betonmischer:

HMP 135 L; HMP 165 L; HMP 180 L

-2006 / 42 / EG	EG – Maschinenrichtlinie
-2014 / 35 / EU	Niederspannungsrichtlinie
-2014 / 30 / EU	EMV – Richtlinie (elektromagnetische Verträglichkeit)

Zur sachgerechten Umsetzung der in den EG-Richtlinien genannten Sicherheits- und Gesundheitsanforderungen wurden folgende Normen und technische Spezifikationen herangezogen:

Outdoor-Richtlinie	LWA: 94,5dB nach 2000 / 14 / EG
-Fertigungsnormen	nach EN 12151
-EN 55014	Grenzwerte für Funkstörungen in Elektrogeräten mit elektromotorischem Antrieb.
-EN 50082 / 1	Fachgrundnorm Störfestigkeit
-EN 61000-3-3	Rückwirkungen in Stromversorgungsnetzen

Abnahmezeugnisse sind einzusehen bei:

Technisches Büro
Josef-Drexler-Str. 8
89331 Burgau
Tel. 08222-41 30 63

ALTRAD-Lescha-GmbH,

Burgau, den 08.06.2017


Hans Rieß
Technik